



Fiona Forsythe
Officer

Dr Malcolm Chainey
Chair

Tyne Valley Community Rail
Partnership

Who are we?

- Established 2004
- Not for profit company limited by guarantee
- 1 officer (30 hours a week)
- Volunteer Directors (each holding a portfolio), press officer, Community Ambassadors and we work with Station Adoption Groups



Who are we?

- First CRP to receive Department for Transport Accreditation on the Northern network
- Membership organisation – Organisations take the role of 'shareholders' (we have a number of parish councils as members)

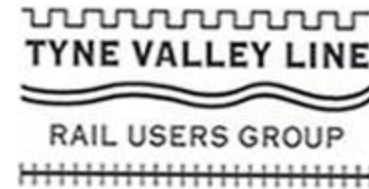


We are not ...

... a rail users' group

Tyne Valley Rail Users' Group is a separate organisation and who have individuals as members

www.tvrug.





What is Community Rail?



Connecting Communities with the Railways:
The Community Rail Development Strategy

Moving Britain Ahead



What is in the strategy?

Four Pillars

- Providing a voice for the community
- Promoting healthy, sustainable and accessible travel
- Supporting social and economic development
- Bringing communities together and supporting diversity and inclusion



Who do we work with?

The Rail Industry

- Train operators: Northern, XC, TPE, LNER, Avanti
- Network Rail
- Strategic conversations: Transport for the North, Rail Delivery Group, Department for Transport



Who do we work with?

Shareholders, examples include:

- World Heritage Site, Northumberland National Park, Community Partnerships, Town/parish councils

Education, examples include:

- Rail Academy, Newcastle College
- Northumbria and Newcastle Universities
- Schools (all ages) and Youth groups



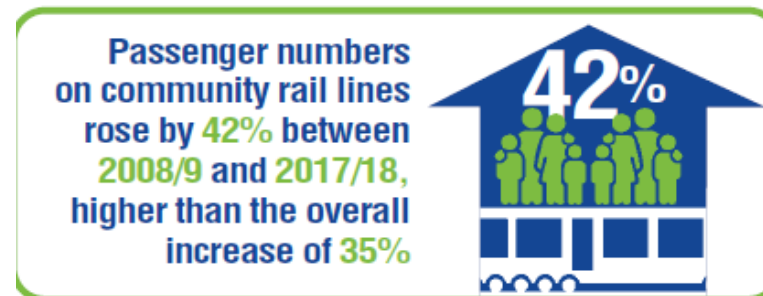
...or in other words..

**A bridge between our
communities and the rail
industry**



We are not alone!

Community Rail Network supports over 70 CRPs across the UK



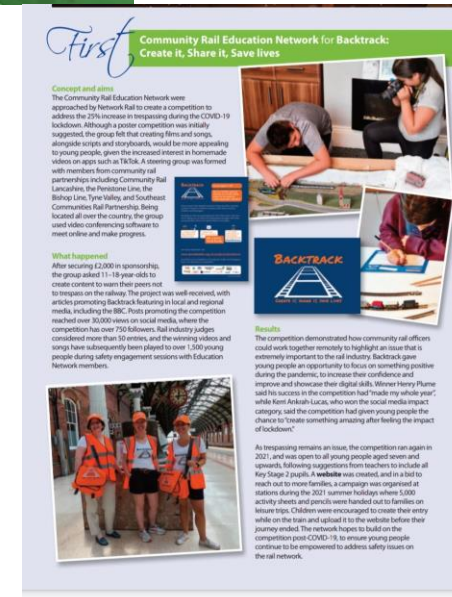
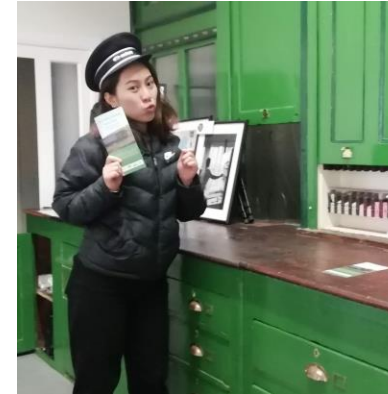
Our resources

Our building



What do we do?

Education



What do we do?

Inclusion: Lyric and Line



Involving Diverse Groups
sponsored by LNER

First Tyne Valley Community Rail Partnership for Lyric and Line

Concept and aims
Music has the power to engage people; that is the simple concept behind **Lyric and Line**.

Singer-songwriter Gareth Davies-Jones approached Tyne Valley Community Rail Partnership (TVCRP) with a proposal to use songs to facilitate various community views of rail travel. For some time, the partnership had been exploring different ways of identifying and understanding barriers to rail use, particularly among groups with additional needs. They wanted to find a way to engage people in more depth, seeing the railway through their eyes.

What happened?
Gareth focused on three groups, who despite being familiar with the partnership's work, did not habitually use the train. Over three months, he built relationships with Gibside SEND School in Gateshead, who regularly took part in TVCRP's education programme, Journey Enterprises, a charity for adults with learning difficulties who run the coffee kiosk at Hexham Station, and Zig Zag, a group for adults experiencing social isolation.

Gareth ran song writing sessions with the groups, bringing out their views on rail travel through music. Each one wrote and recorded an original song, identifying their challenges in using the train and the joys of rail travel.

Gibside School pupils spoke of the railway as 'an adventure', while Journey focused on the practicalities of travel. Zig Zag, who had the most experience of rail travel as a group, highlighted that using ticket machines, a fear of buying the wrong ticket, and worries over toilets and the height of train steps were all barriers to their rail use. However, they were also clear that if you get it right, rail travel can be 'the best way to understand the world'.

Results
Each group was able to record an initial version of their song just before the beginning of the first Covid-19 lockdown. TVCRP had planned to promote the work at various events, but instead, hosted an online Zoom session in which Gareth explained the project and played the songs, to overwhelmingly positive comments. The partnership now plans to package this session as a webinar on its redesigned website.

Gaining valuable insights into the views of the three groups has enabled TVCRP to set specific working objectives to reduce barriers to travel and build on the excitement that Lyric and Line has created. The project had an immediate impact with Journey, who took a group on the line for the first time in March 2020.



What do we do?

Buildings



What do we do?

Projects



What do we do?

Stations



The Stations of the Tyne Valley Line



A review of the buildings, facilities and environment at the stations on the Tyne Valley Line, carried out on behalf of the Tyne Valley Community Rail Partnership (TVCRP)
October 2021



A reminder...

Four Pillars

- Providing a voice for the community
- Promoting healthy, sustainable and accessible travel
- Supporting social and economic development
- Bringing communities together and supporting diversity and inclusion



How you can help...

- Work with us to improve stations
- Promote our education work
- Promote our inclusion work
- Improve the interface between County and Railway



Thank you

- www.tvcrp.org.uk
- TVCRP Facebook, Twitter, Instagram, LinkedIn
- fiona@tvcrp.org.uk
- chair@tvcrp.org.uk

